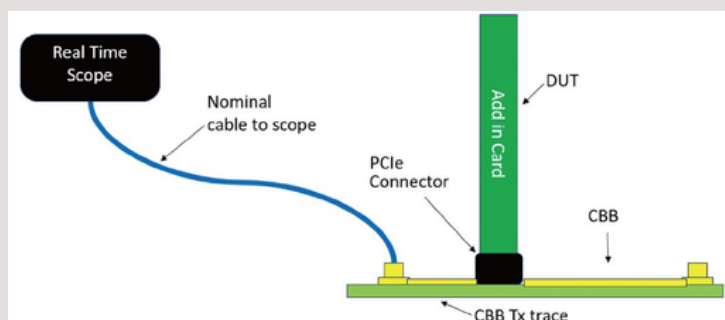


# PCIe<sup>®</sup> 6.0 Test Fixtures

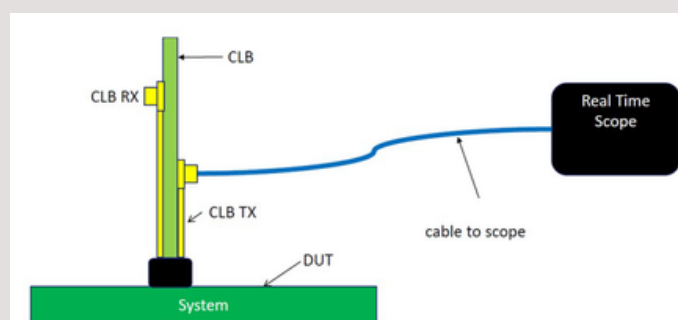
PCIe 6.0 test fixtures are specialized circuit boards and cables used to test the electrical performance and compliance of a device's PCIe 6.0 interface. They act as an essential bridge between the device under test (DUT) and the testing equipment. The datasheet for a PCIe 6.0 test fixture typically describes its physical and electrical characteristics, which are critical for ensuring accurate and reliable test results.

## Key Features:

- CLB supports PCIe 6.0 (64GT/s) used for System TX/RX testing .
- CLB needs additional PCI-SIG ISI Board or the scope's built-in package parameters to optimize signal analysis .
- CBB supports PCIe 6.0 (64GT/s) used for AIC TX/RX testing .
- MMPX connectors 100% compatible with PCI-SIG ISI board.
- CLK w/ SSC: 0.5% / 0.25% / OFF
- Long and short channel both included
- side band design
- Low Jitter Clean clock
- External Reference Clock Injection
- Pairs of SMPs for clock noise injection
- ATX power supply connector
- Power/Reset/Toggle Automation input pins
- Self Stack-up design
- Under Plug and Unplug Test
- Impedance Control optimization
- Return loss optimization



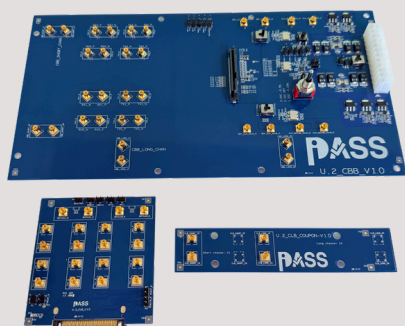
Basic Electrical Test configuration using the CBB board



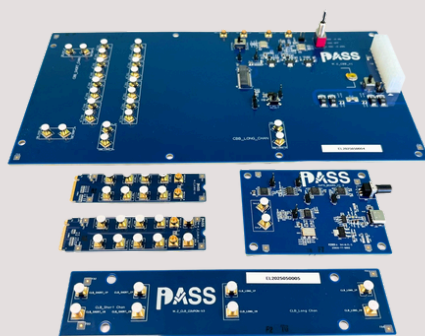
Basic Electrical Test configuration using the CLB board

• Overview:

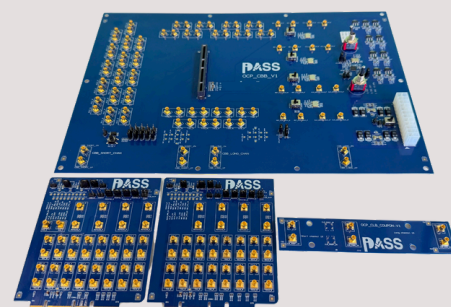
	M.2/M.2-1a	U.2	EDSFF-1C	EDSFF-2C	EDSFF-4C	OCP
Product Kit	CBB CLB 1 CLB 2 CMTS Coupon	CBB CLB CMTS Coupon	CBB CLB CMTS Coupon	CBB CLB 1 CLB 2 CLB 2 CMTS Coupon	CBB CLB 1 CLB 2 CLB 3 CLB 4 CMTS Coupon	CBB CLB 1 CLB 2 CMTS Coupon
CBB TX/RX Lanes	4/4	4/4	4/4	8/8	16/16	16/16
CBB CLK	1	2	2	2	2	4
CBB Connector	75 pin (20*80mm)	68 pin	56 pin	84 pin	140 pin	168 pin(4C+) (14*OA pin+14*OB Pin included)
CBB Dimension	285*160mm	265*140mm	265*140mm	270*140mm	295*210mm	320*220mm
CLB Dimension	22*80mm	75*81mm	62*76mm	63*76mm	79*78mm	93*111mm



**U.2**



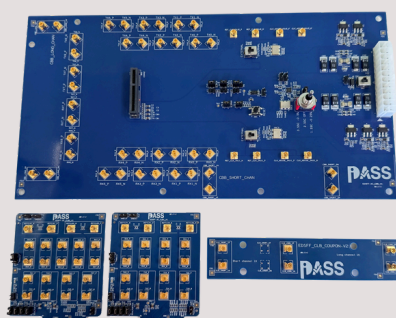
**M.2**



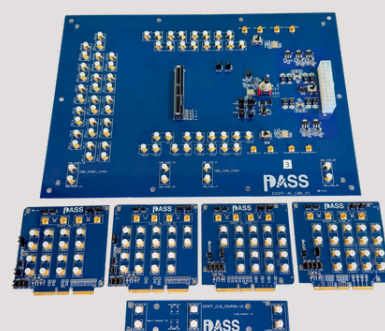
**OCP**



**EDSFF-1C**

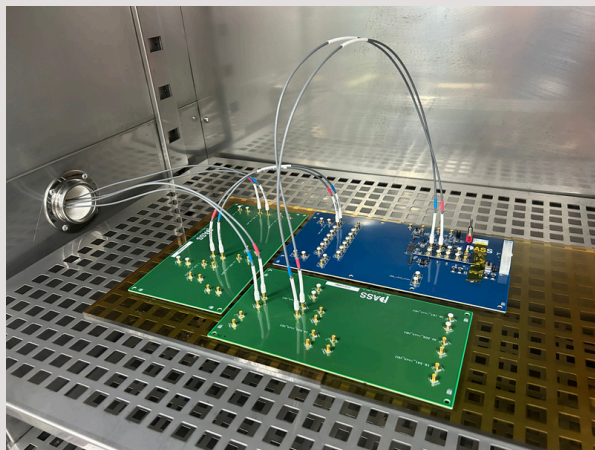


**EDSFF-2C**

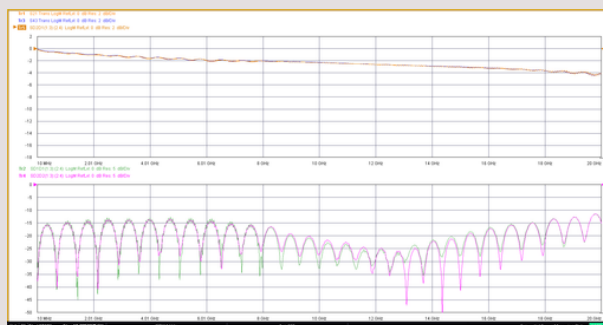


**EDSFF-4C**

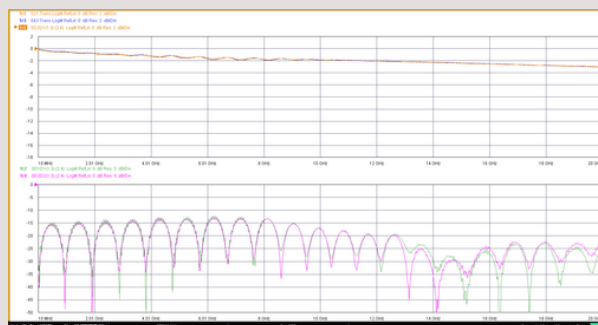
## • Under Temperature test



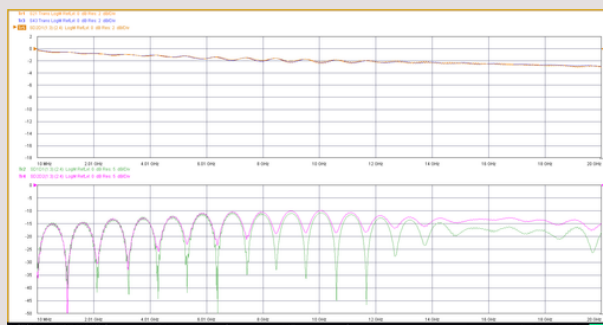
## • Insertion loss optimization



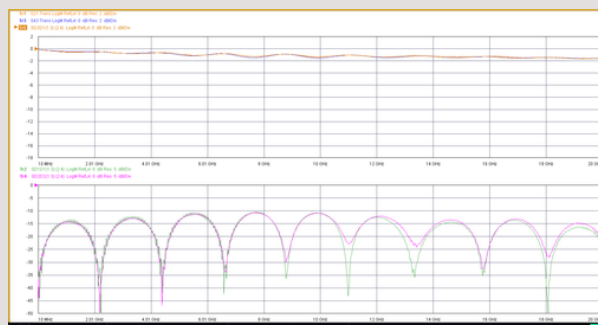
CBB\_Long Channel



CBB\_Short Channel

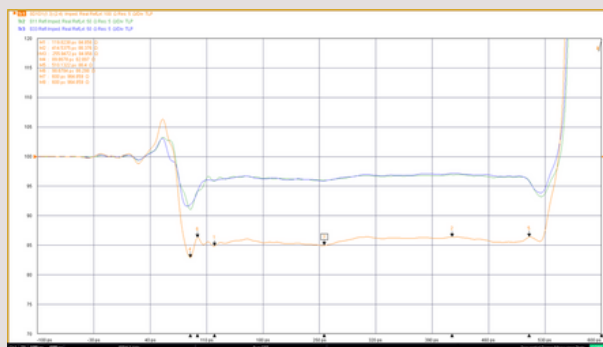


CLB\_Long Channel



CLB\_Short Channel

## • TDR Measurement Result



Measurement Result 82.897~86.4  $\Omega$

## • Accessories - Cables

- |   |
|---|
| 1. NMCX(m)/NMCX(m)/50ohm/305mm            |
| 2. NMCX(m)/NMCX (m)/50ohm/610mm           |
| 3. NMCX(m)/1.85(m)/50ohm/914mm            |
| 4. NMCX(m)/1.85(f)/50ohm/102mm            |
| 5. 1.85(m)/1.85(m)/50ohm/914mm            |
| 6. 1.85(m)/1.85(m)/50ohm/1200mm (ISI use) |

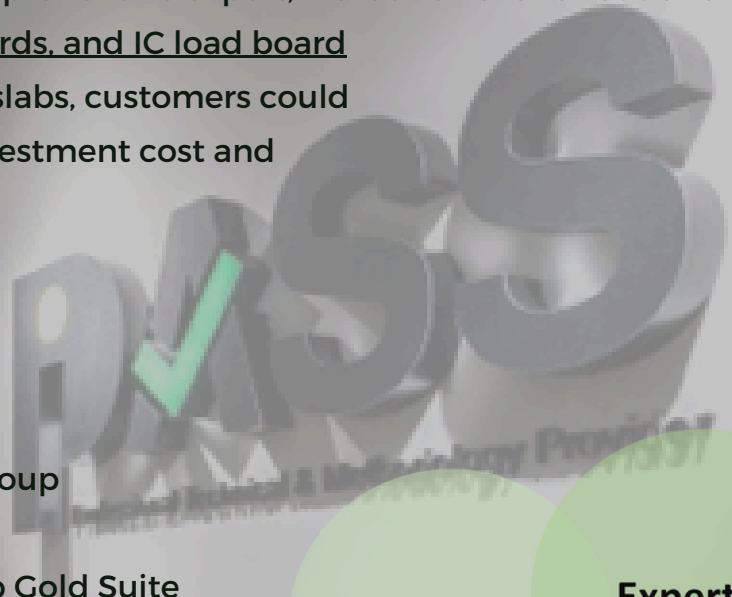


# About iPasslabs

iPasslabs as a member of PCI-SIG, was established at Neihu Dist. Taipei on June 2021 and it's holding by several experts who are working on High speed serial data and DataCom industrial over 20+ years. iPasslabs provides professional High Speed Serial Data/ Datacom SI/PI simulation analysis, validation and more test solutions, and keeps investing innovative test equipments. Furthermore, to be a comprehensive expert, we launch the various and newest generation of PCIe test fixtures, ISI boards, and IC load board as the product line. Working with iPasslabs, customers could achieve a perfect balance between investment cost and product development cycle.

## Profiles:

- **PCI-SIG Authorized Test Lab**
- PCI-SIG Serial Enabling Working Group
- PCI-SIG Optical Working Group
- PCI-SIG Compliance Test Workshop Gold Suite
- The first test lab in TW has been approved by Industrial Upgrading Innovation Platform Guidance Program from the Ministry of Economic Affairs
- Co-developing advanced patents with the Industrial Technology Research Institute (ITRI)
- The distributor of Wilder Technologies
- iPasslabs in Malaysia is an officially registered HRD Corp certified training provider
- Follow us:



## Contact Us:

+886-2-66058498  
mkt@ipasslabs.com

## Worldwide branches:

Shanghai : sales@ipasslabs.com.cn Malaysia : kris.wong@ipasslabs.com  
PCI Express and the PCIe design mark are registered trademark and/or service marks of PCI-SIG