



PCIe Gen5

Products of Test Fixtures

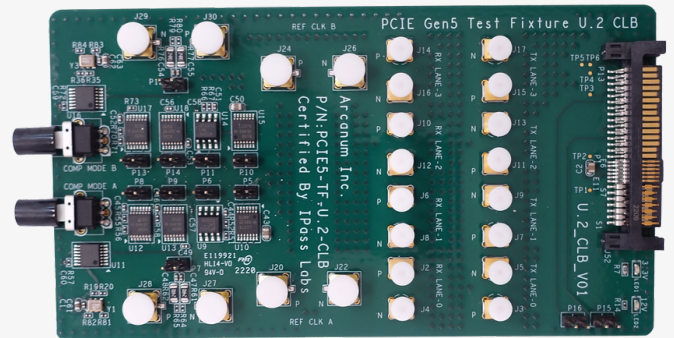
iPasslabs Technology Co., Ltd.



U.2(NVMe) Gen5

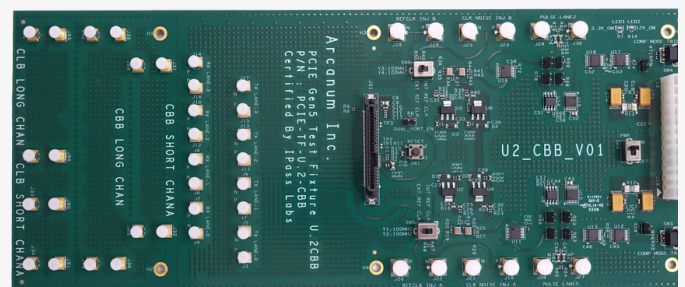
CLB

- Signal Integrity Board for U.2(SFF-8693) Physical Layer Conformance.
- Support PCIe5.0 (32GT/s) used for testing Transmitters.
- Paired with U.2 Gen5 (CBB) used for Receiver Calibration.
- Comes with one (1) CLB. PCIE-TF-U.2-CLB.
- Need additional Gen5 CEM (SIG-REV4) ISI Board for the testing.
- MMPX connector is 100% compatible with PCI-SIG CEM ISI board.



CBB

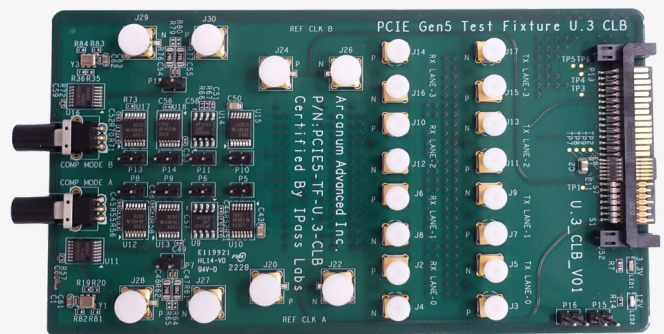
- Signal Integrity Board for U.2(SFF-8693) Physical Layer Conformance.
- Signal Integrity Board for U.2(SFF-8693) Physical Layer Conformance.
- Paired with U.2 Gen5 (CLB) used for Receiver Calibration.
- Comes with one (1) CBB. PCIE5-TF-U.2-CBB.
- MMPX connector is 100% compatible with PCI-SIG CEM ISI board.



U.3(NVMe) Gen5

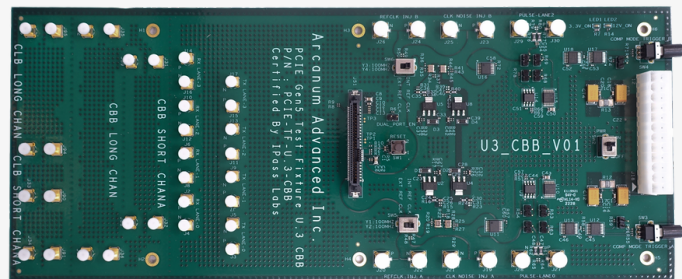
CLB

- Signal Integrity Board for U.3(SFF-TA-1001) Physical Layer Conformance.
- Support PCIe5.0 (32GT/s) used for testing Transmitters.
- Paired with U.3 Gen5 (CBB) used for Receiver Calibration.
- Comes with one (1) CLB. PCIE-TF-U.3-CLB.
- Need additional Gen5 CEM (SIG-REV4) ISI Board for the testing.
- MMPX connector is 100% compatible with PCI-SIG CEM ISI board.

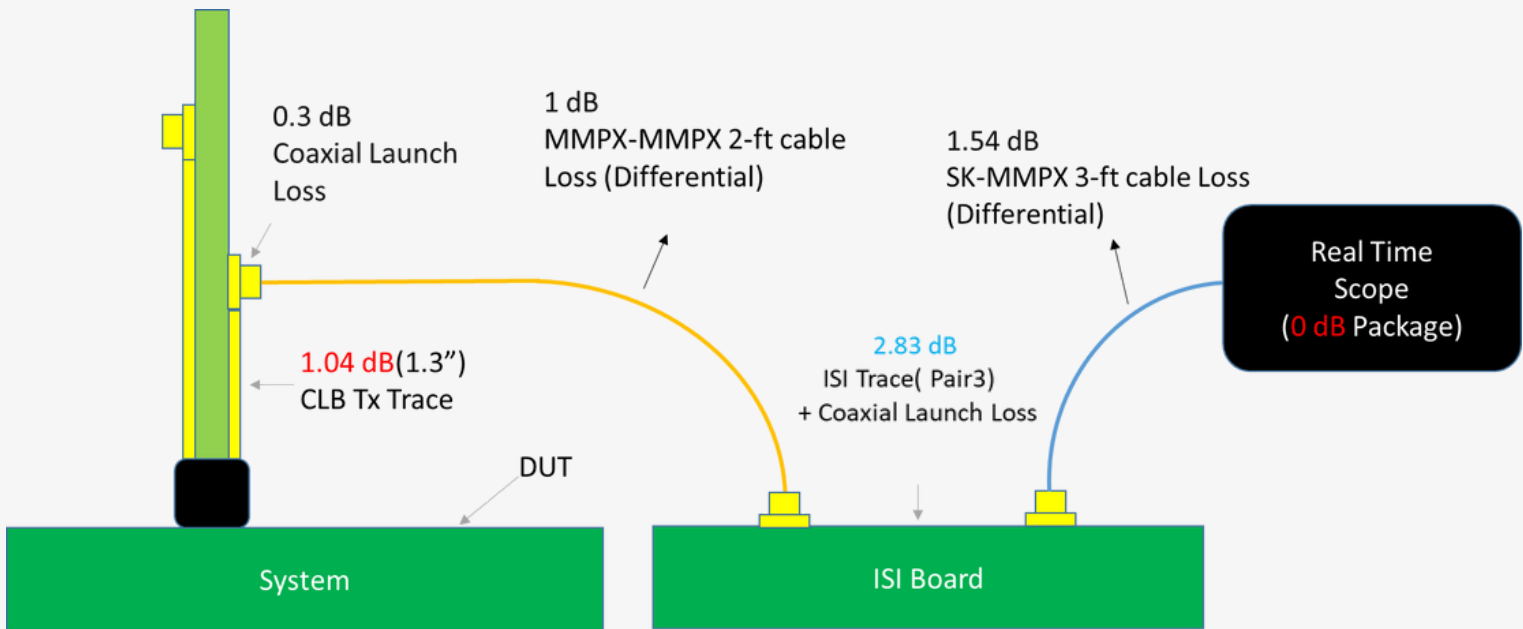


CBB

- Signal Integrity Board for U.3(SFF-TA-1001) Physical Layer Conformance.
- Support PCIe5.0 (32GT/s) used for testing Receivers.
- Paired with U.3 Gen5 (CLB) used for Receiver Calibration.
- Comes with one (1) CBB. PCIE5-TF-U.3-CBB.
- MMPX connector is 100% compatible with PCI-SIG CEM ISI board.



Test Environment for U.2 & U.3 Fixture

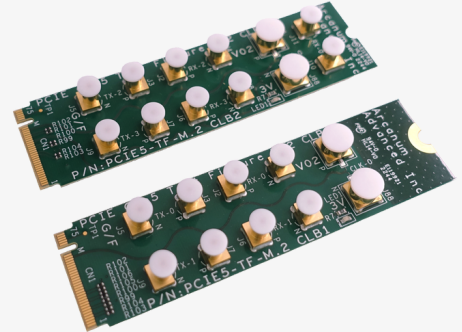


	CLB Tx Trace Loss	Coaxial Launch Loss(Pair)	MMPX-MMPX 2-ft cable loss	ISI trace loss	SK-MMP 3-ft cable Loss	Package loss	Total Loss (Target: 6.5 dB)
Actual	1.04dB	0.3dB	1dB	2.83dB	1.54dB	0dB	6.71dB

M.2 Gen5

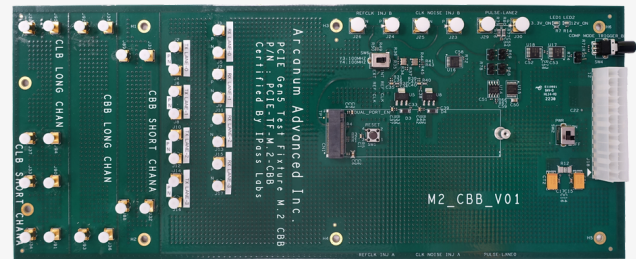
CLB

- Signal Integrity Board for M.2 Physical Layer Conformance.
- Support PCIe5.0 (32GT/s) used for testing Transmitters.
- Paired with M.2 Gen5 (CBB) used for Receiver Calibration.
- Comes with two (2) CLBs. PCIE-TF-M.2-CLB1 for Lane0-1; PCIE5-TF-M.2-CLB2 for Lane2-3.
- Need additional Gen5 CEM (SIG-REV4) ISI Board for the testing.
- MMPX connector is 100% compatible with PCI-SIG CEM ISI board.

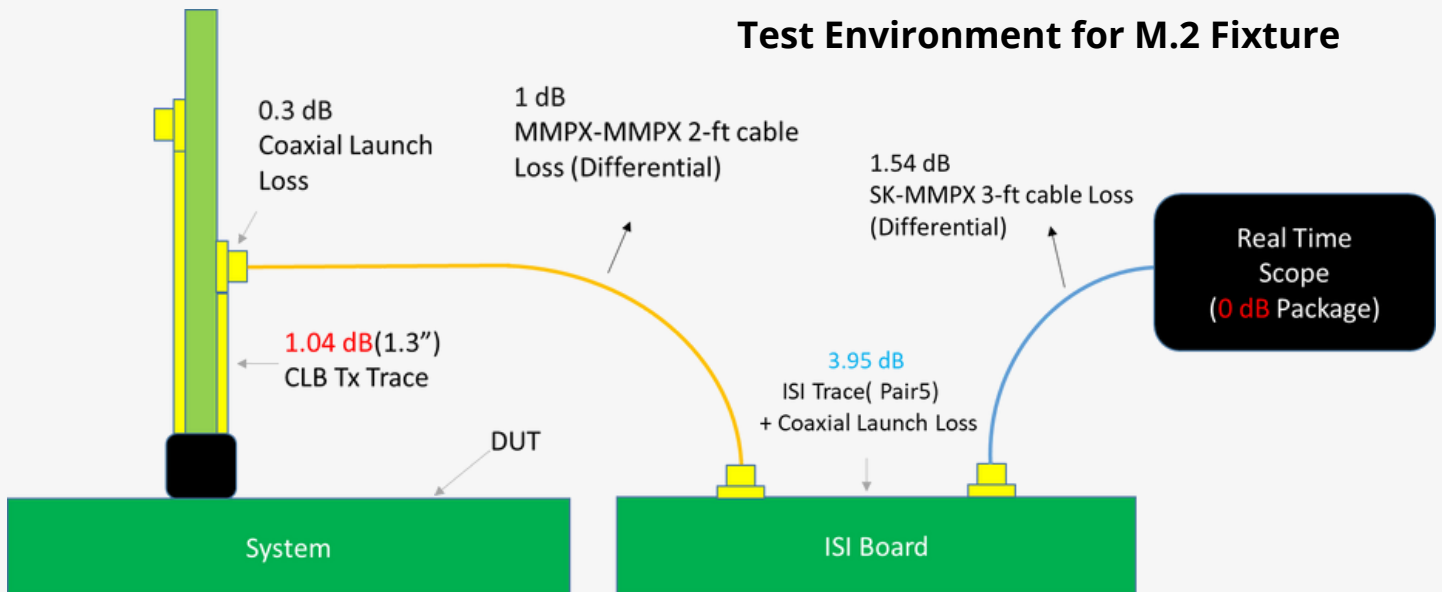


CBB

- Signal Integrity Board for M.2 Physical Layer Conformance.
- Support PCIe5.0 (32GT/s) used for testing Receivers.
- Paired with M.2 Gen5 (CLB) used for Receiver Calibration.
- Comes with one (1) CBB. PCIE5-TF-M.2-CBB.
- MMPX connector is 100% compatible with PCI-SIG CEM ISI board.



Test Environment for M.2 Fixture

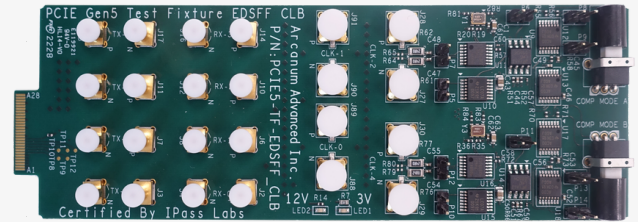


	CLB Tx Trace Loss	Coaxial Launch Loss(Pair)	MMPX-MMPX 2-ft cable loss	ISI trace loss	SK-MMP 3-ft cable Loss	Package loss	Total Loss (Target: 7.5dB)
Actual	1.04dB	0.3dB	1dB	3.95dB	1.54dB	0dB	7.83dB

EDSFF(E1.S/E1.L) Gen5

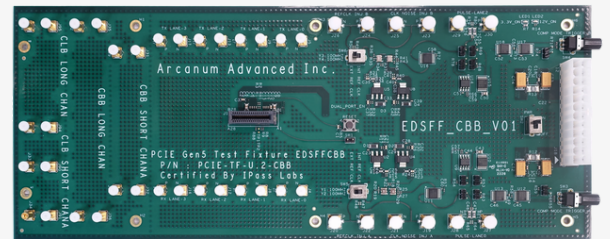
CLB

- Signal Integrity Board for EDSFF(SFF-TA-1006, SFF-TA-1007) Physical Layer Conformance
- Support PCIe5.0 (32GT/s) used for testing Transmitters.
- Paired with EDSFF Gen5 (CBB) used for Receiver Calibration.
- Comes with one (1) CLB. PCIE-TF-EDSFF-CLB.
- Need additional Gen5 CEM (SIG-REV4) ISI Board for the testing.
- MMPX connector is 100% compatible with PCI-SIG CEM ISI board.

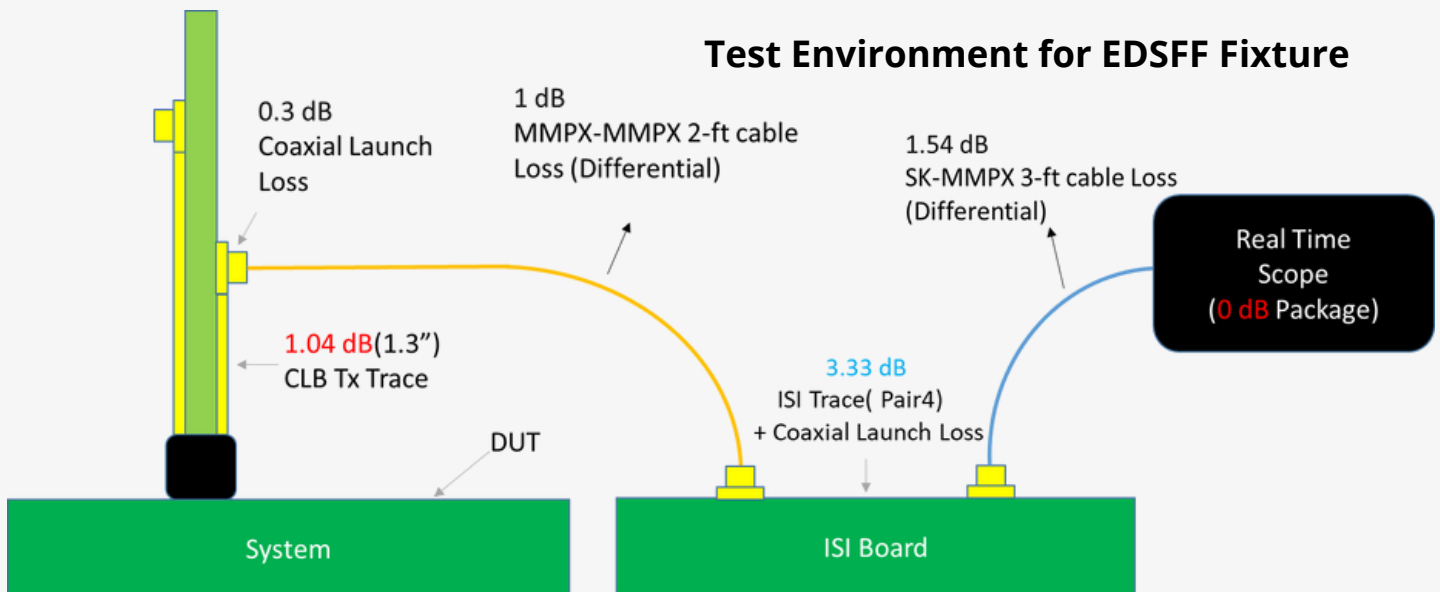


CBB

- Signal Integrity Board for EDSFF(SFF-TA-1006, SFF-TA-1007) Physical Layer Conformance
- Support PCIe5.0 (32GT/s) used for testing Receivers.
- Paired with EDSFF Gen5 (CLB) used for Receiver Calibration.
- Comes with one (1) CBB. PCIE5-TF-EDSFF-CBB.
- MMPX connector is 100% compatible with PCI-SIG CEM ISI board.



Test Environment for EDSFF Fixture

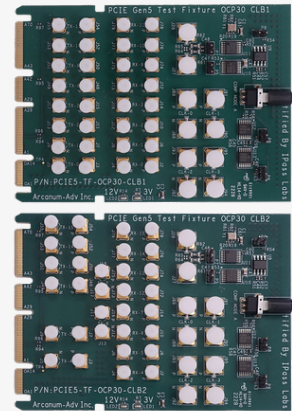


	CLB Tx Trace Loss	Coaxial Launch Loss(Pair)	MMPX-MMPX 2-ft cable loss	ISI trace loss	SK-MMP 3-ft cable Loss	Package loss	Total Loss (Target: 7 dB)
Actual	1.04dB	0.3dB	1dB	3.33dB	1.54dB	0dB	7.21dB

OCP3.0 Gen5

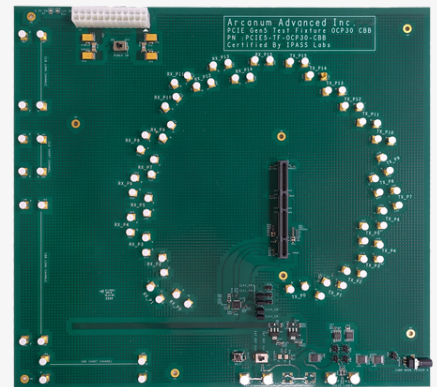
CLB

- Signal Integrity Board for OCP3.0 NIC Physical Layer Conformance.
- Support PCIe5.0 (32GT/s) used for testing Transmitters.
- Paired with OCP3.0 Gen5 (CBB) used for Receiver Calibration.
- Comes with two (2) CLBs. PCIE5-TF-OCP30-CLB1 for Lane0-3 & Lane8-11; PCIE5-TF-OCP30-CLB2 for Lane4-7 & Lane8-15.
- Need additional Gen5 CEM (SIG-REV4) ISI Board for the testing.
- MMPX connector is 100% compatible with PCI-SIG CEM ISI board.

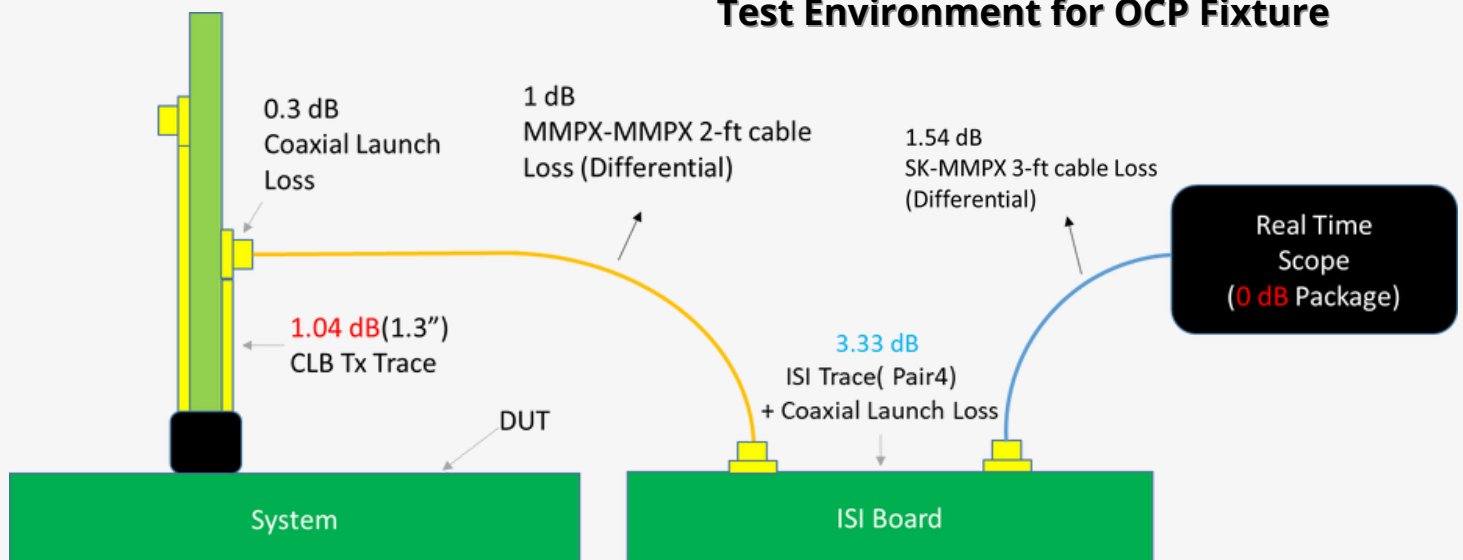


CBB

- Signal Integrity Board for OCP3.0 NIC Physical Layer Conformance.
- Support PCIe5.0 (32GT/s) used for testing Receivers.
- Paired with OCP3.0 Gen5 (CLB) used for Receiver Calibration.
- Comes with one (1) CBB. PCIE5-TF-OCP30-CBB.
- MMPX connector is 100% compatible with PCI-SIG CEM ISI board.



Test Environment for OCP Fixture




	CLB Tx Trace Loss	Coaxial Launch Loss(Pair)	MMPX-MMPX 2-ft cable loss	ISI trace loss	SK-MMPX 3-ft cable Loss	Package loss	Total Loss (Target: 7 dB)
Actual	1.04dB	0.3dB	1dB	3.33dB	1.54dB	0dB	7.21dB

About iPasslabs



iPasslabs was established at Naihui Dist. Taipei on June 2021 and it 's holding by several experts who working on High speed serial data and DataCom industrial over 20+ years. iPasslabs focus on providing professional High Speed Serial Data validation and Signal Integrity Simulation service, and we also providing Wilder Technologies Test fixture and Prodigy Technovations protocol analyzers sales and technical support service as well. Furthermore, to be a comprehensive expert, we've launched the various PCIe Gen5 test fixtures from our own production, which being on the Process of the certification from PCI-SIG.



 +886-2-66058498

 mkt@ipasslabs.com

